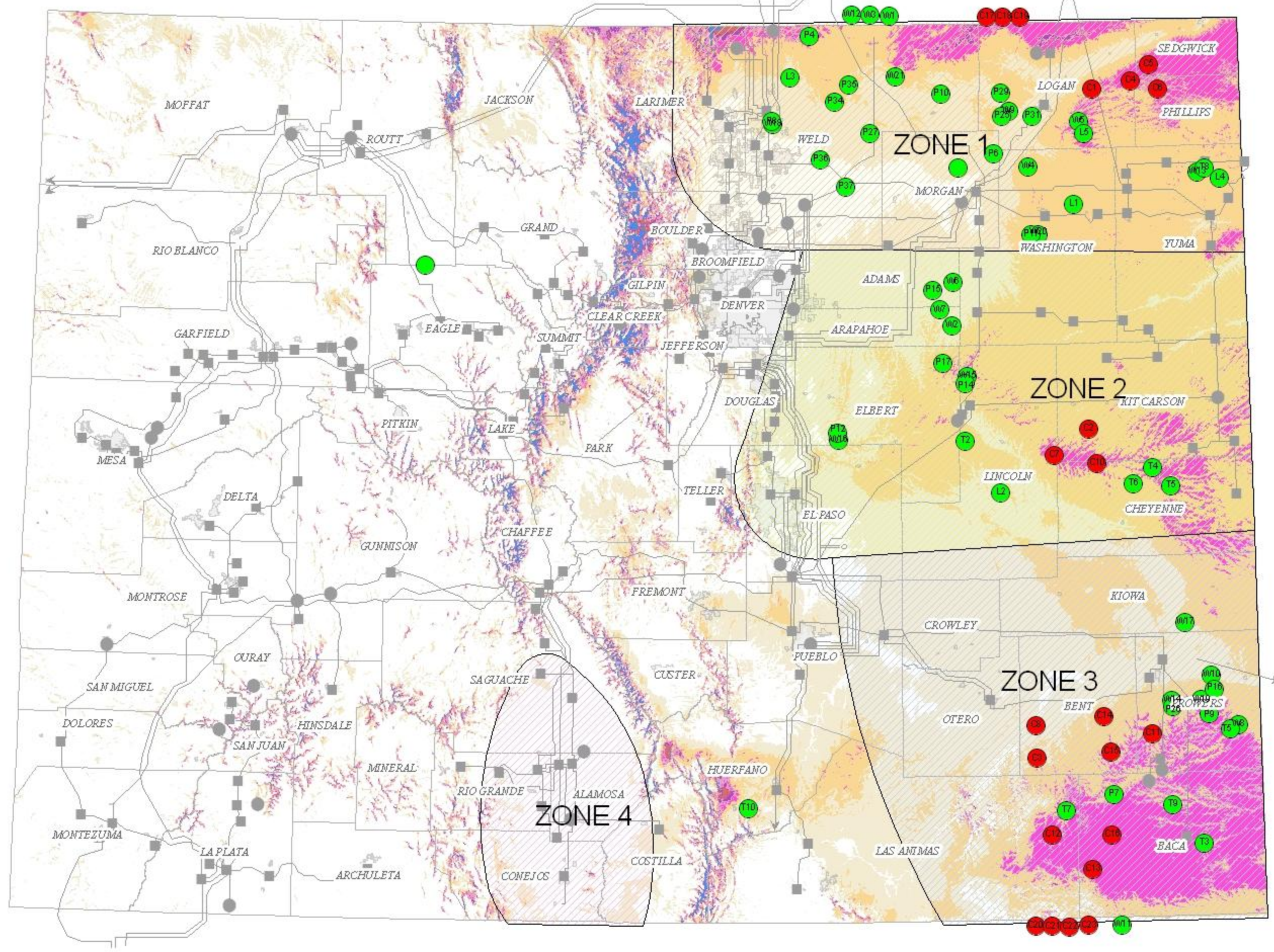


**Wind Projects  
(LGIP, All Source,  
SB100 Comments)**



**Wind Power Classification**

Wind Power Class	Resource Potential	Wind Power Density at 50 m W/m <sup>2</sup>	Wind Speed <sup>1</sup> at 50 m m/s	Wind Speed <sup>2</sup> at 50 m mph
1 Poor	0 - 200	0.0 - 0.9	0.0 - 13.2	
2 Marginal	200 - 300	0.9 - 0.7	13.2 - 16.0	
3 Fair	300 - 400	0.7 - 2.4	16.0 - 16.9	
4 Good	400 - 600	2.4 - 2.9	16.9 - 17.7	
5 Excellent	600 - 800	2.9 - 3.4	17.7 - 18.8	
6 Outstanding	800 - 900	3.4 - 3.8	18.8 - 20.9	
7 Super	> 900	> 3.8	> 20.9	

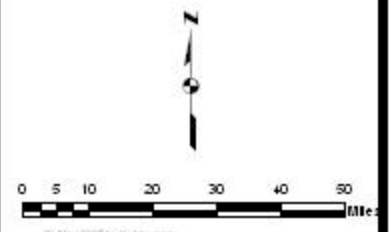
<sup>1</sup>W or speeds not based on a Weibull k of 2.0 or 1000m elevation

Wind Power at 50 Meters

**Legend**

- WIND
- SB100
- P = PSCo
- T = Tri-State
- L = Loveland WAPA

May 30, 2007



© May 2007 by S. Swanson  
Source: USGS National Renewable Energy Laboratory  
Xcel Energy, The Energy & Engineering